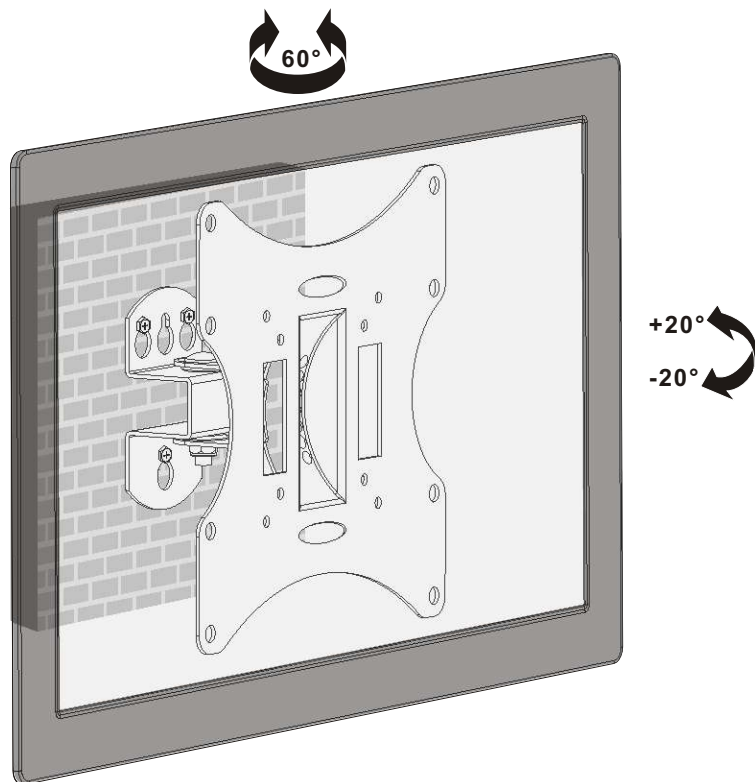


#### 4. Adjustment



Use the tilt adjusting knob to adjust your display to the desired angle then tighten it.

#### Maintenance

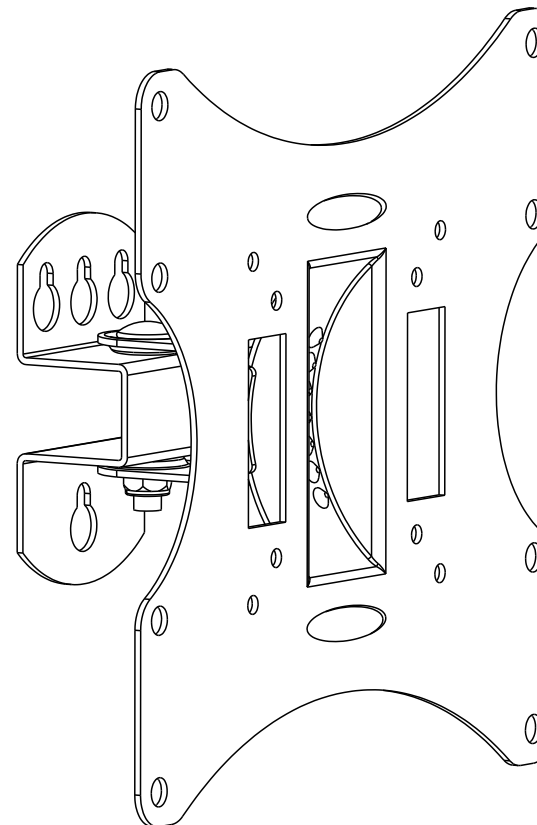
- Check that the bracket is secure and safe to use at regular intervals(at least every three months).
- Please contact your dealer if you have any questions.

reflecta gmbh  
Junghansring 60  
72108 Rottenburg  
Germany

mail@reflecta.de  
www.reflecta.de

#### INSTALLATION MANUAL

## Full Motion LED, LCD TV Wall Mount



**CAUTION:** DO NOT EXCEED  
RATED LISTED WEIGHT. SERIOUS  
INJURY OR PROPERTY DAMAGE  
MAY OCCUR!

23107

23110



75x75/100x100  
200x100/200x200



ISSUED: FEB. 2013

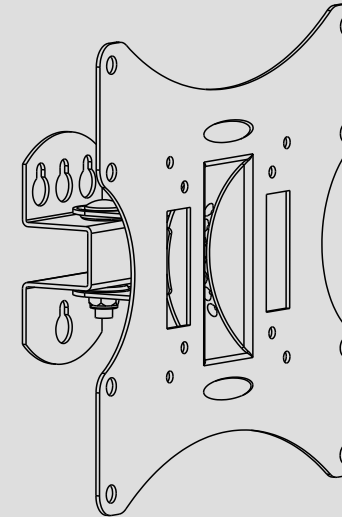
**NOTE:** Read the entire instruction manual before you start installation and assembly.

## ⚠ WARNING

- Do not begin the installation until you have read and understood all the instructions and warnings contained in this installation sheet. If you have any questions regarding any of the instructions or warnings, please contact your local distributor.
- This mounting bracket was designed to be installed and utilised **ONLY** as specified in this manual. Improper installation of this product may cause damage or serious injury.
- This product should only be installed by someone with good mechanical ability who has basic building experience and fully understands this manual.
- Make sure that the supporting surface will safely support the combined weight of the equipment and all attached hardware and components.
- If mounting to wood wall studs, make sure that mounting screws are anchored into the center of the studs. The use of a stud finder is highly recommended.
- Always use an assistant or mechanical lifting equipment to safely lift and position the equipment.
- Tighten screws firmly, but do not over tighten. Over tightening can cause damage to the items, This greatly reduces their holding power.
- This product is intended for indoor use only. Using this product outdoors could lead to product failure and personal injury.

## Component Checklist

**IMPORTANT:** Ensure that you have received all parts according to the component checklist prior to installation. If any parts are missing or faulty, telephone your local distributor for a replacement.



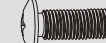
### Package M



M4x14 (x4)  
M-A



M5x14 (x4)  
M-B



M6x14 (x4)  
M-C



M8x20 (x4)  
M-D



D5 washer (x4)  
M-E



D8 washer (x4)  
M-F



small spacer (x8)  
M-G

### Package W

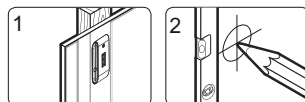
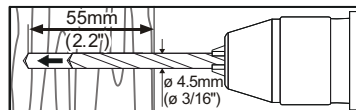
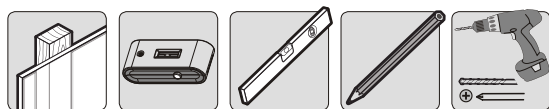


ST6.3x55 (x3)  
W-A

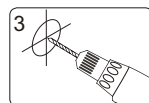


concrete anchor (x3)  
W-B

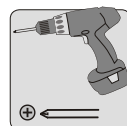
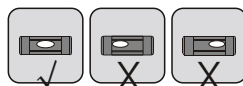
## 1a. For Wood Stud Wall Mounting



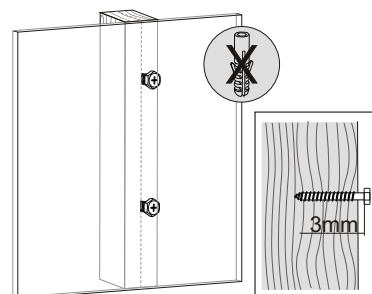
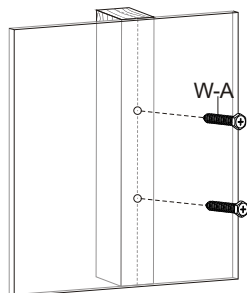
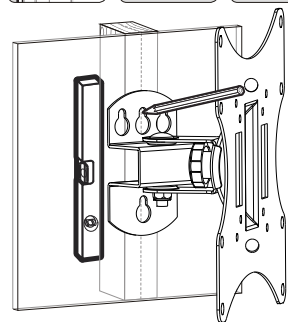
Find and mark the exact location of mounting holes



Drill pilot holes



Screw the wall mount onto the wall

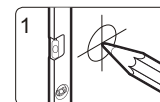
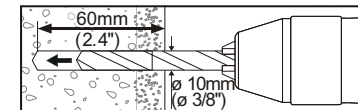
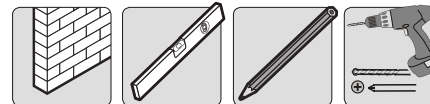


Tighten the screws leaving a 3mm space to the wall plate.

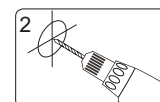
## ! WARNING

- Make sure that mounting screws are anchored into the center of the studs. The use of a stud finder is highly recommended.
- Installers are responsible to provide hardware for other types of mounting situations.
- Installers must verify that the supporting surface will safely support the combined weight of the equipment and all attached hardware and components.

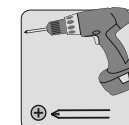
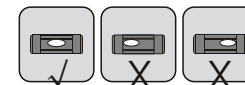
## 1b. For Solid Brick and Concrete Mounting



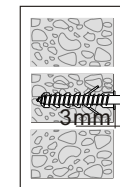
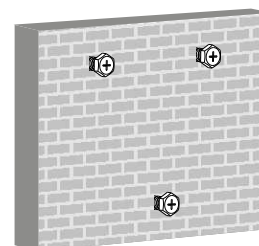
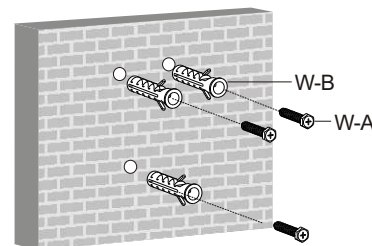
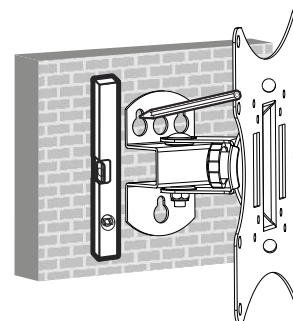
Mark the exact location of mounting holes



Drill pilot holes



Screw the wall mount onto the wall

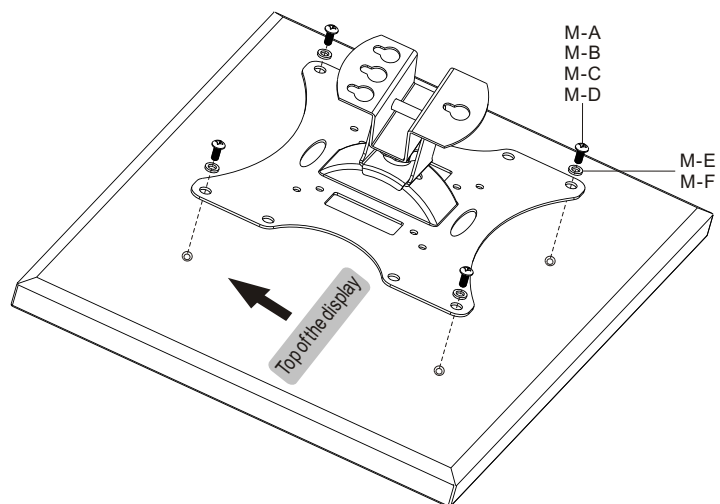
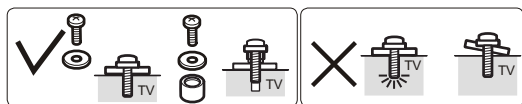


Tighten the screws leaving a 3mm space to the wall plate.

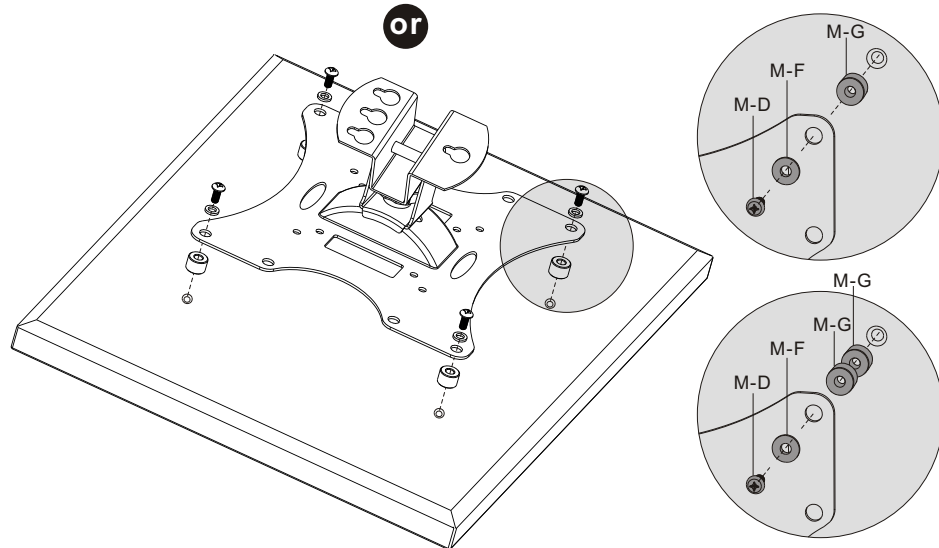
## ! WARNING

Installer must verify that the supporting surface will safely support the combined weight of the equipment and all attached hardware and components.

## 2. Installing the Wall Mount



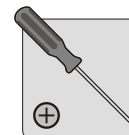
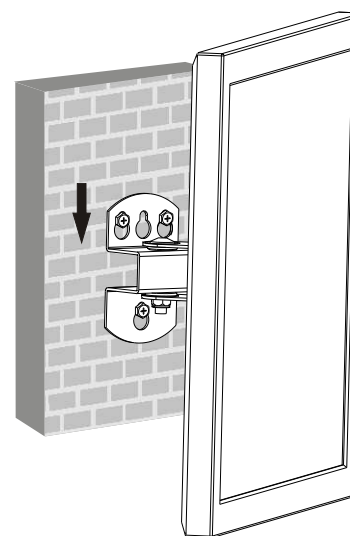
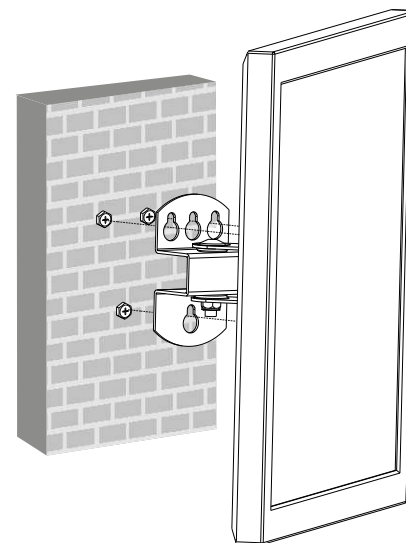
or



**Note:** Choose the appropriate screws, washers and spacers (if necessary) according to the type of screen. Screw the wall mount onto the display.

**⚠ Tighten all screws but do not over tighten.**

## 3. Installing the Display



- Align the holes of the wall plate to the screws in wall and lower the wall plate until the screws are seated in the upper area of tear-drop mounting holes.
- Tighten all screws for secure.