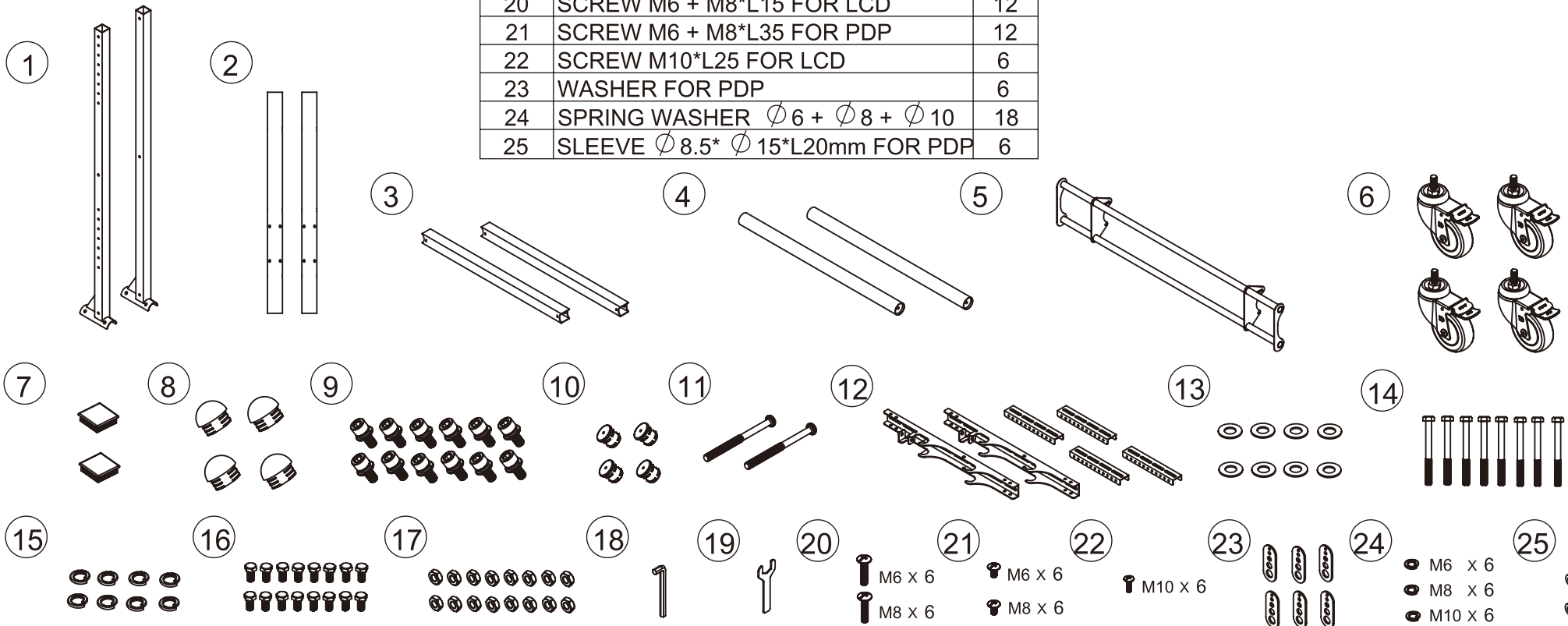
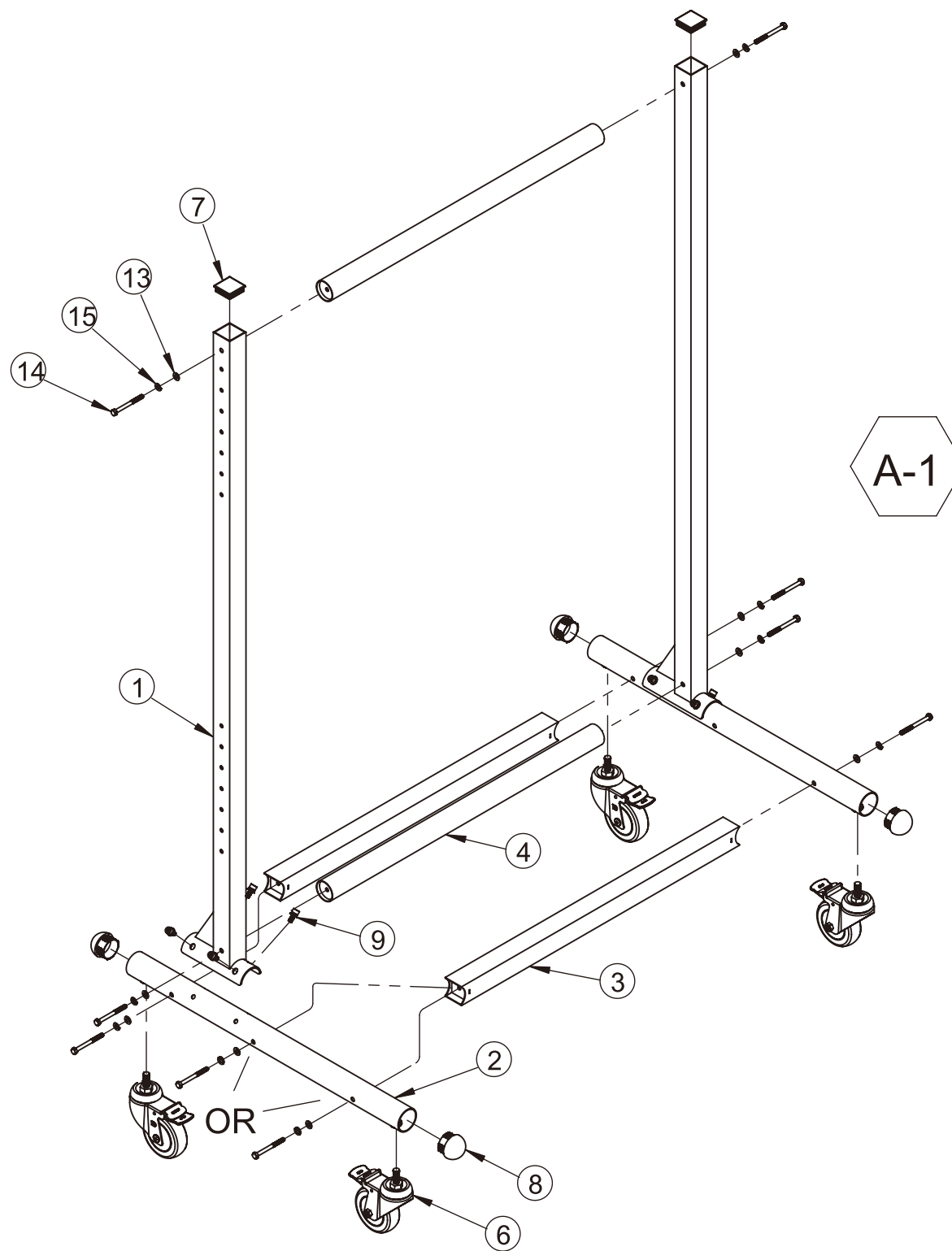
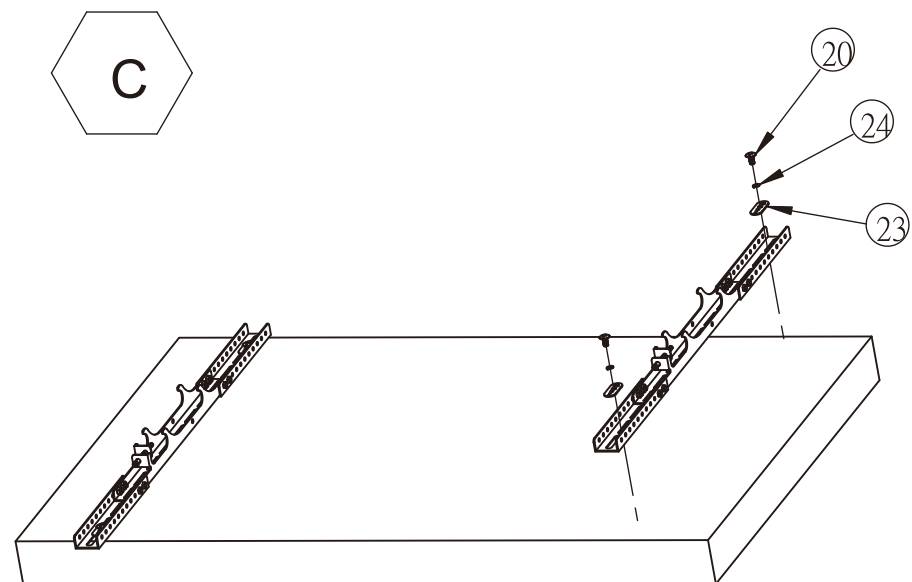
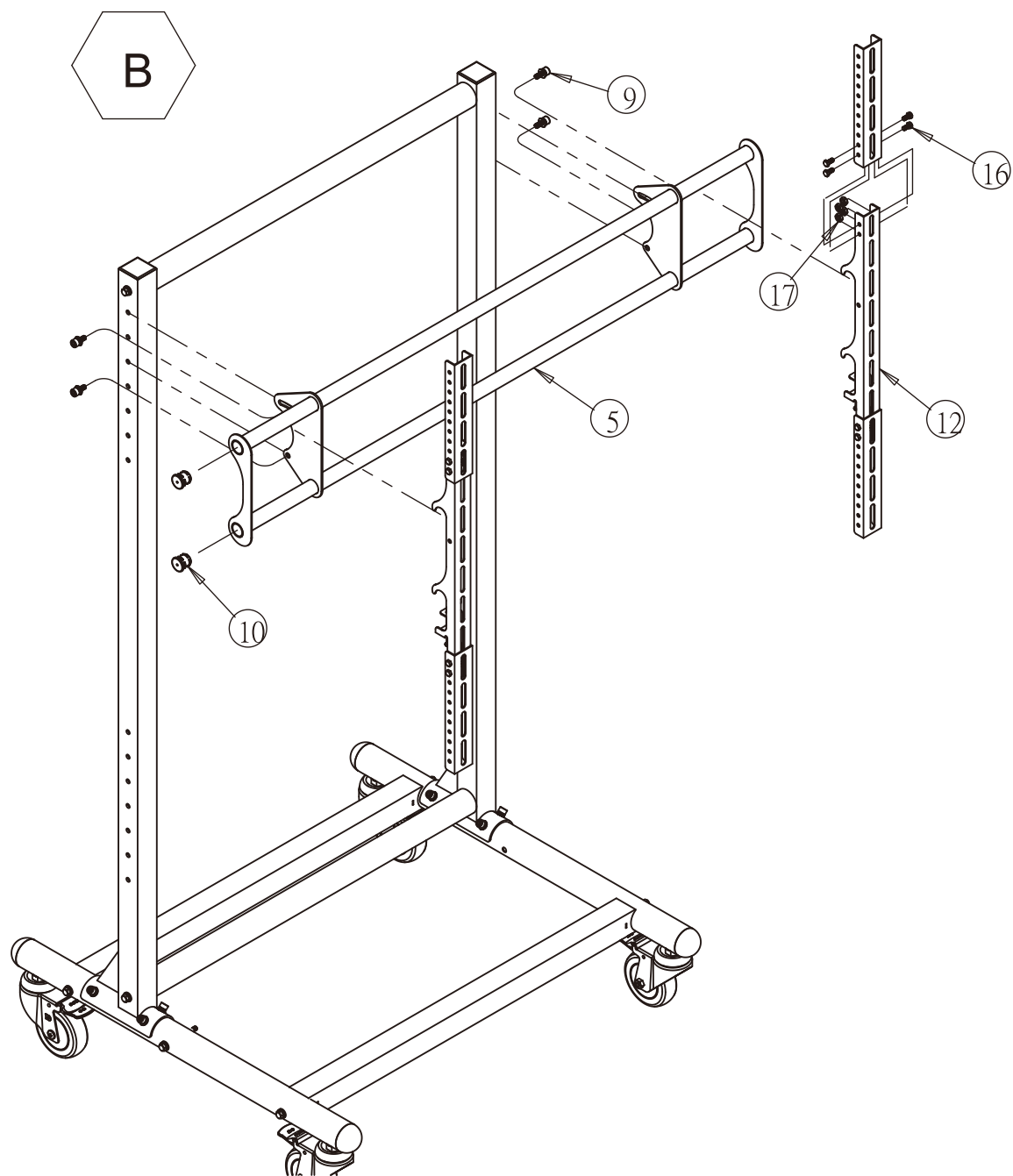


Item	Spare parts	Q'ty
1	FIXED TUBE (RIGHT + LEFT)	2
2	BASE TUBE	2
3	SQUARE TUBE	2
4	CIRCULAR TUBE	2
5	ANGLE ADJUSTMENT GROUP	1
6	WHEEL	4
7	PLASTIC COVER □45*45	2
8	PLASTIC COVER ϕ 50.8	4
9	SCREW CAP 5/16" -18UNC* L3/4" + 2 WASHERS	12
10	PLASTIC COVER ϕ 25.4	4
11	SCREW RH 1/4"-20UNC*L3"	2
12	FIXED PLATE	6
13	WASHER ϕ 5/16"	8
14	SCREW BH 5/16"-18UNC *L3"	8
15	SPRING WASHER ϕ 5/16	8
16	SCREW BH 1/4"-20UNC*L1/2"	16
17	NUT 1/4"-20UNC	16
18	ALLEN WRENCH NO.6	1
19	WRENCH NO.21	1
20	SCREW M6 + M8*L15 FOR LCD	12
21	SCREW M6 + M8*L35 FOR PDP	12
22	SCREW M10*L25 FOR LCD	6
23	WASHER FOR PDP	6
24	SPRING WASHER ϕ 6 + ϕ 8 + ϕ 10	18
25	SLEEVE ϕ 8.5* ϕ 15*L20mm FOR PDP	6

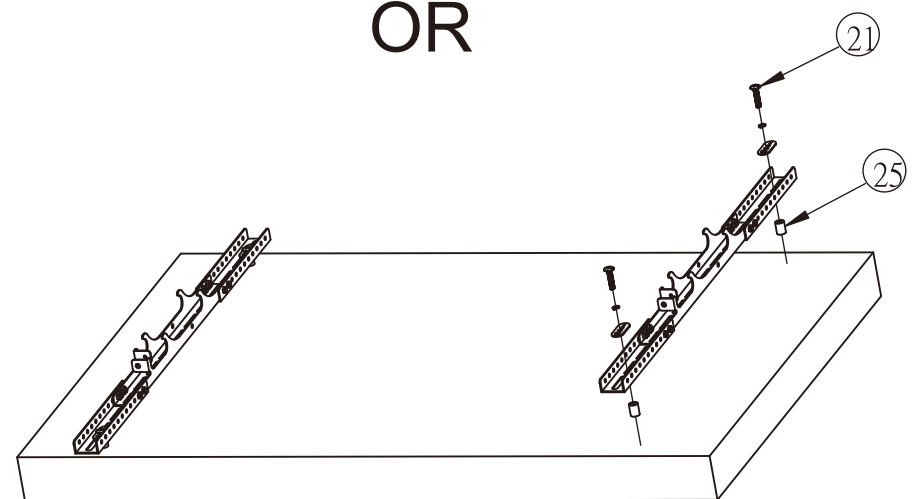


A

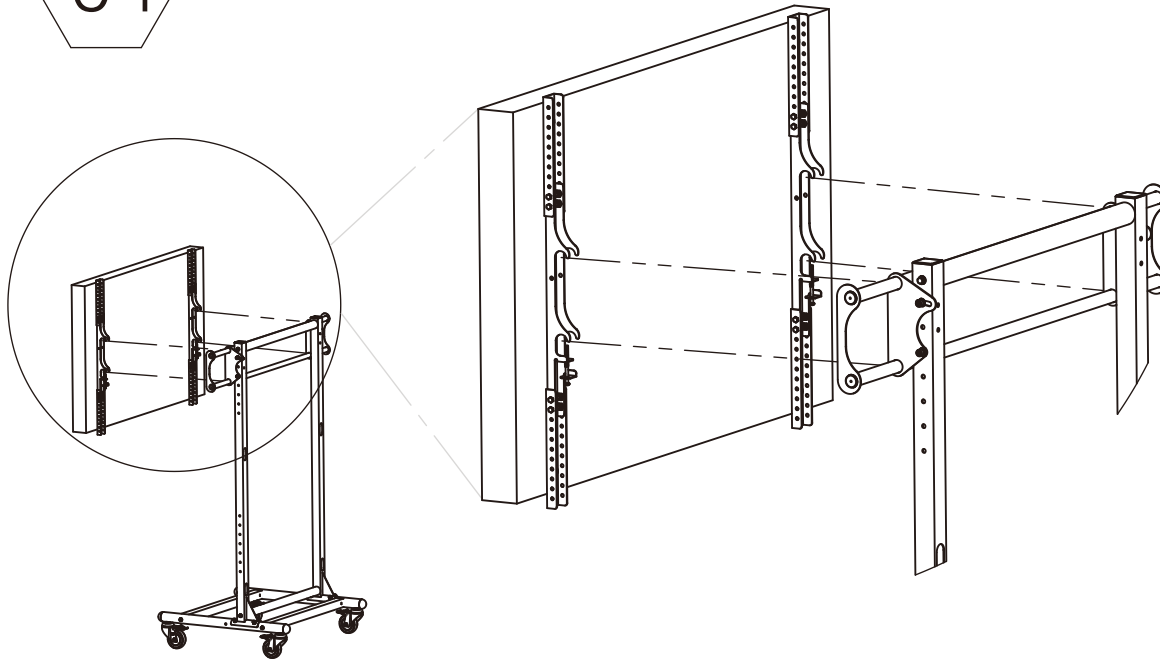




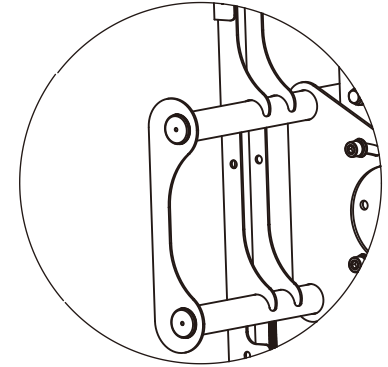
OR



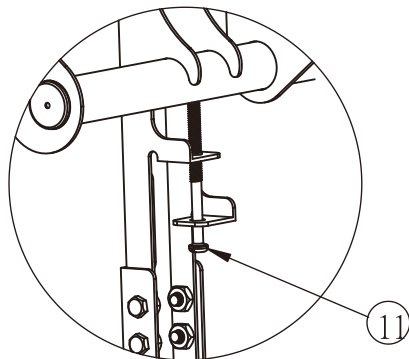
C-1



C-2



C-3



C-4

